



# CUMBERLAND VALLEY ANALYTICAL SERVICES

Laboratory services for agriculture ... from the field to the feed bunk.

**Farm:** WEAVER FALLS DAIRY  
**Desc:** CORN SILAGE R13  
**Submitter:** JONES, JOHN  
**Account:** FOUR STATE FEEDS

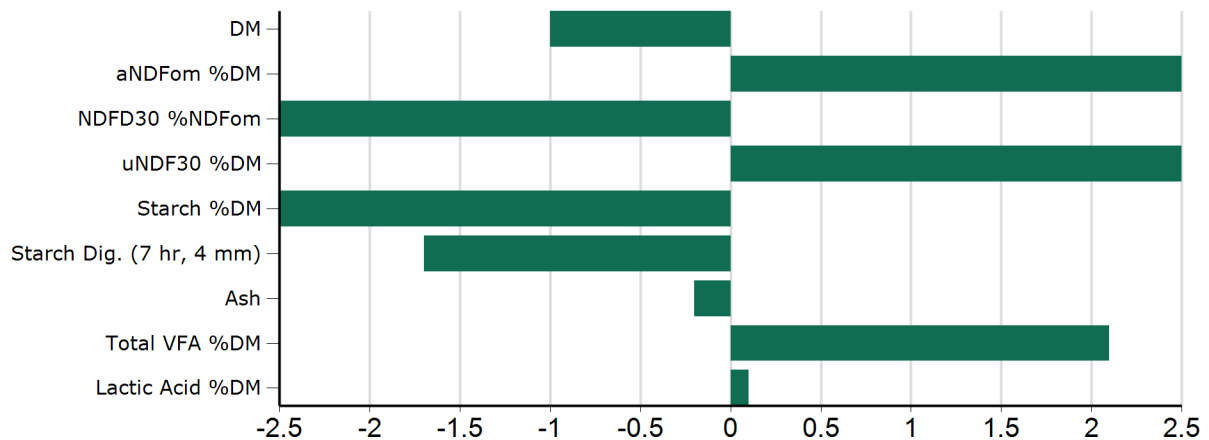
**Copies to:**

**Lab ID:** 19745 129  
**Sampled:** 02/22/2017  
**Arrived:** 02/24/2017  
**Completed:** 02/25/2017  
**Reported:** 03/10/2017

## Report of Key Nutrients

| CORN SILAGE              | Your Sample | Average | Standard Deviation |
|--------------------------|-------------|---------|--------------------|
| DM                       | 30.4        | 35.5    | 5.3                |
| aNDFom %DM               | 52.9        | 38.8    | 4.5                |
| NDFD30 %NDFom            | 44.8        | 57.5    | 4.5                |
| uNDF30 %DM               | 29.4        | 16.6    | 3.0                |
| Starch %DM               | 18.4        | 33.4    | 6.1                |
| Starch Dig. (7 hr, 4 mm) | 66.6        | 76.6    | 6.0                |
| Ash                      | 3.5         | 3.7     | 1.1                |
| Total VFA %DM            | 11.0        | 7.2     | 1.9                |
| Lactic Acid %DM          | 4.9         | 4.9     | 1.5                |

**Your Results Compared to the Average of ALL Samples  
(Difference in Standard Deviations from the Mean)**



Powered by Cumberland Valley Analytical Services, Inc.



4999 Zane A. Miller Drive, Waynesboro, PA 17268  
www.foragelab.com | mail@foragelab.com | 301-790-1980 | 800-CVAS-LAB

